

ASSEMBLY INSTRUCTIONS FOR LYDDINGTON SHOP

IMPORTANT

GENERAL GUIDELINES

Read ALL of this instruction booklet before you do anything else.

These assembly instructions follow the procedures we use in our workshop.

You will find that assembly is easier when working on a smooth flat surface.

Ensure sufficient protection is used to prevent damage to the work surface especially when drilling.

Standard white PVA glue is suitable for all joints. Follow the manufacturer's recommendations on application and handling.

WE DO NOT RECOMMEND THE USE OF FAST DRYING GLUE

We do not use nails or screws for the carcass assembly.

The carcass is held together with parcel tape until the glue is fully dry

These kits are very accurately made and it is important to ensure all joints are pushed fully home.

Clamping the carcass with sash cramps, 'G' cramps etc. may pull it out of square, as will standing it on an uneven surface.

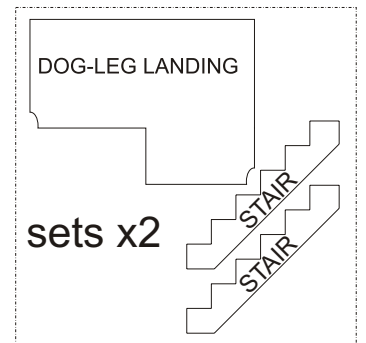
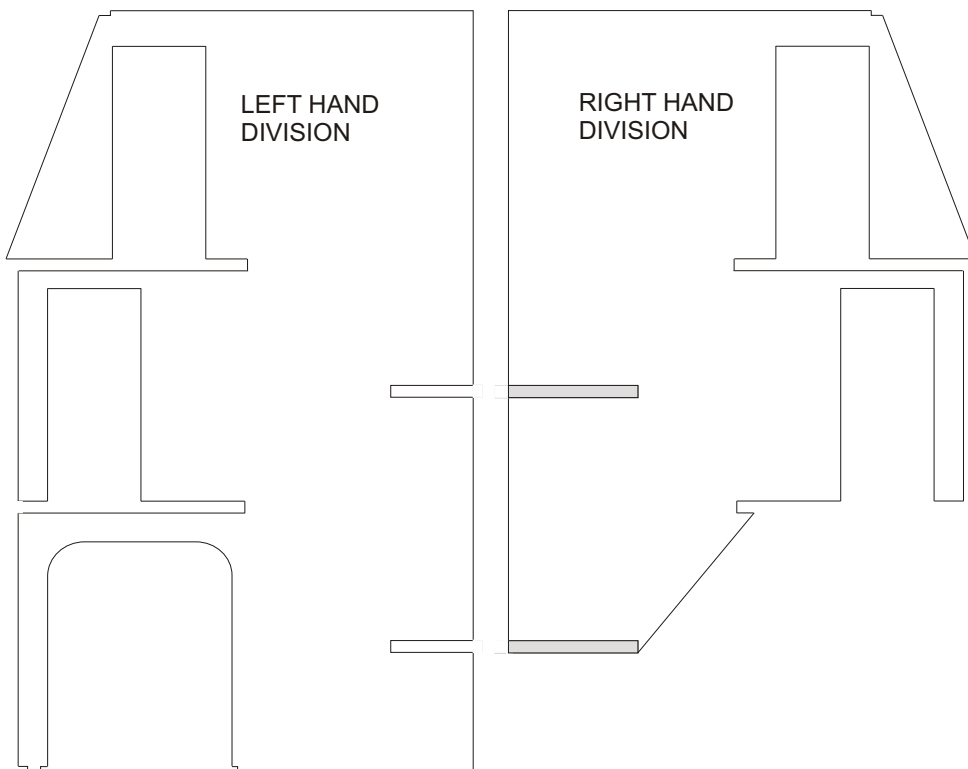
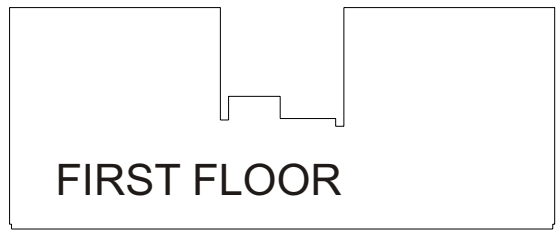
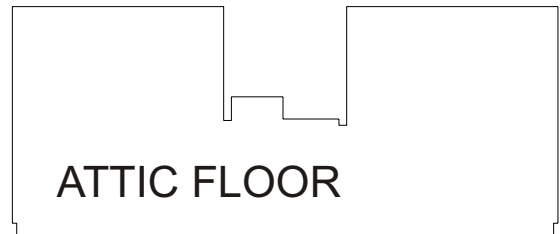
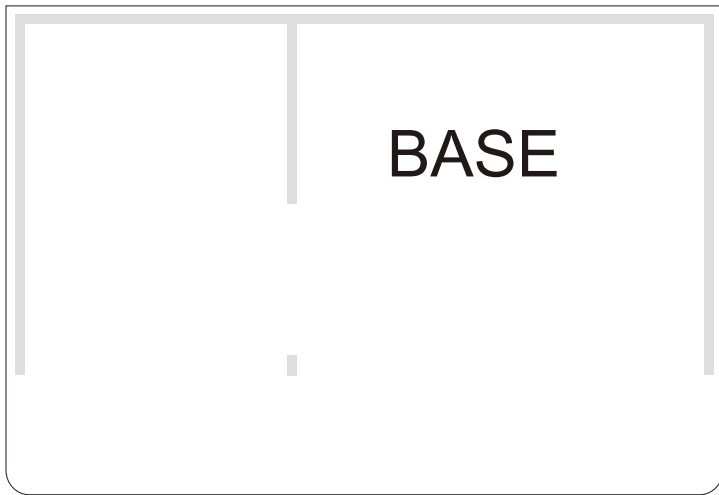
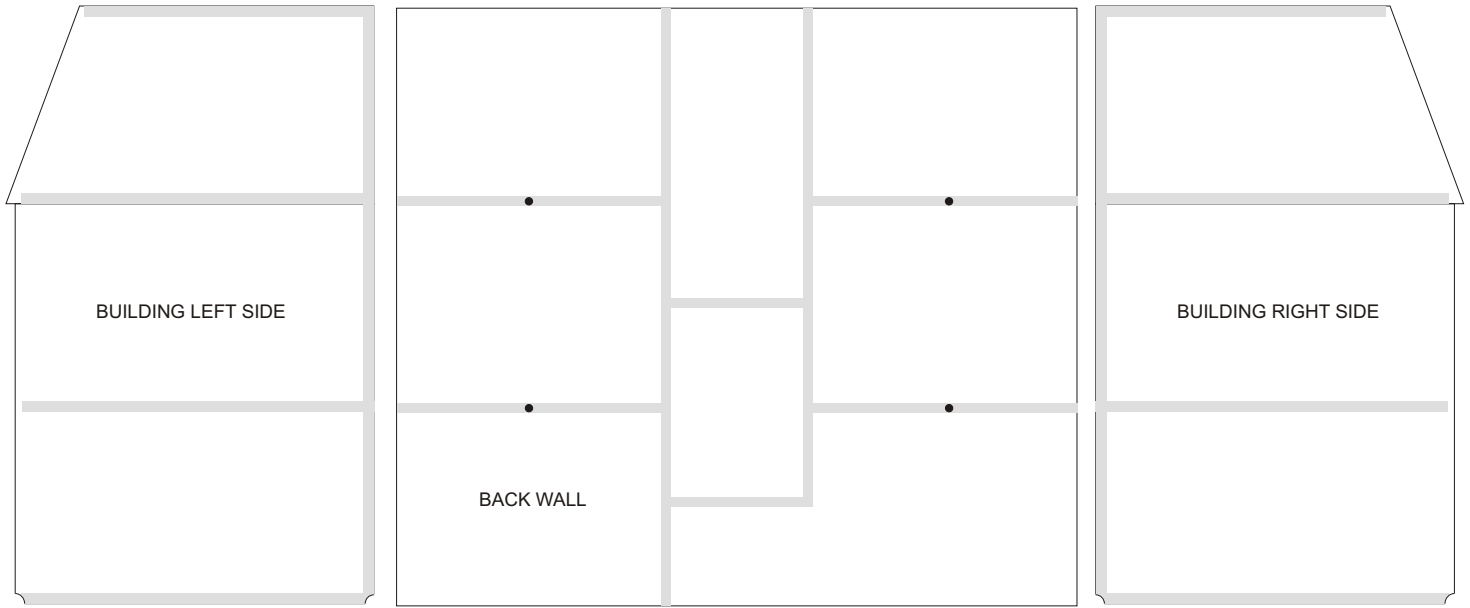
You do need to have a flat surface to assemble this kit on.

OPEN PACKAGE AND IDENTIFY ALL PARTS BEFORE ASSEMBLY

We strongly recommend that you first put the assembly together, without glue, to familiarize yourself with the procedure and ensure that all the parts are fitted correctly.

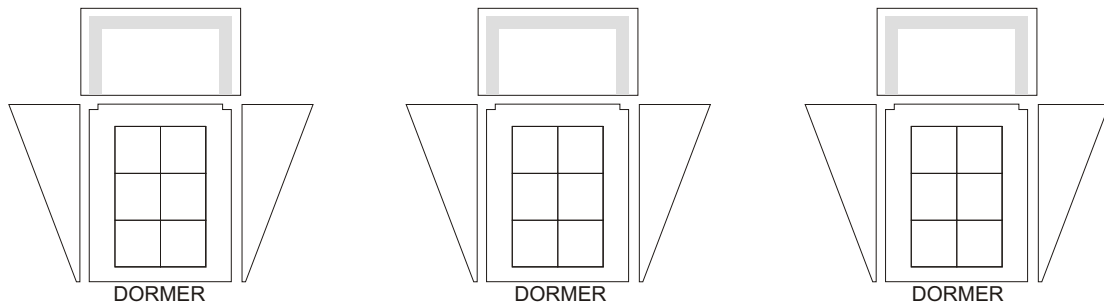
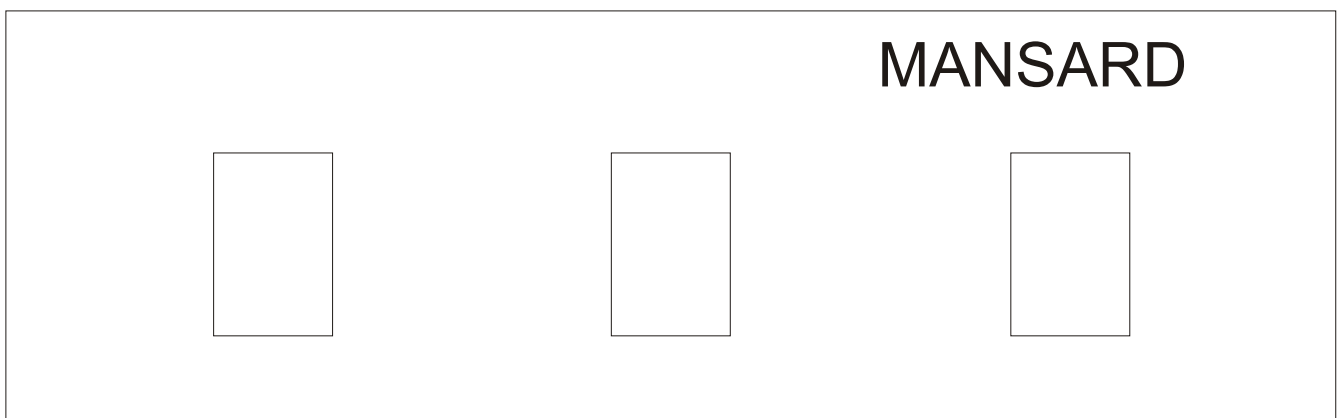
PARTS FOR MAIN BODY

NOT TO SCALE



PARTS FOR ROOF

NOT TO SCALE



HARDWARE PACK

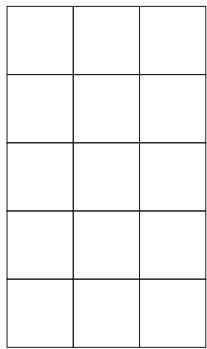
In the re-sealable bag there should be:-

<u>ITEM</u>	<u>QTY.</u>	<u>NOTE</u>
Large hinge	7	(3 for the roof and 2 each for the front openings)
Counter sunk screw	49	(7 for each large hinge)
Small hinge	2	(For front door)
Domed screw	8	(4 for each small hinge)
Domed pin	2	(For magnetic catch in each front opening)

PARTS FOR SHOP FRONT

NOT TO SCALE

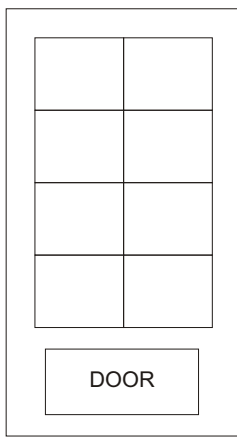
2 SETS OF THESE REQUIRED



WINDOW x 5



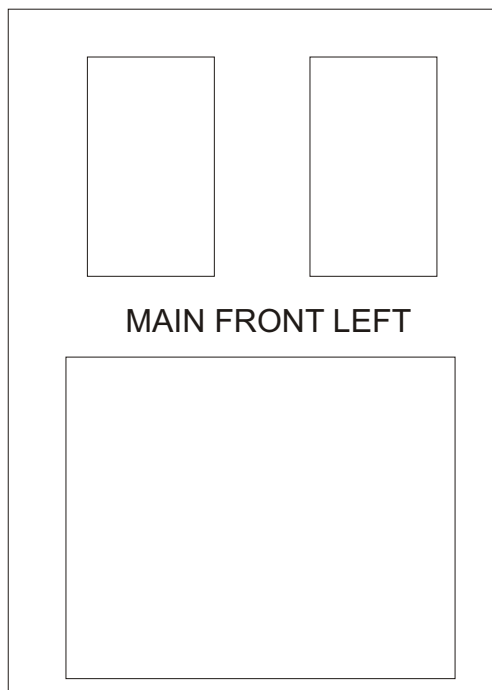
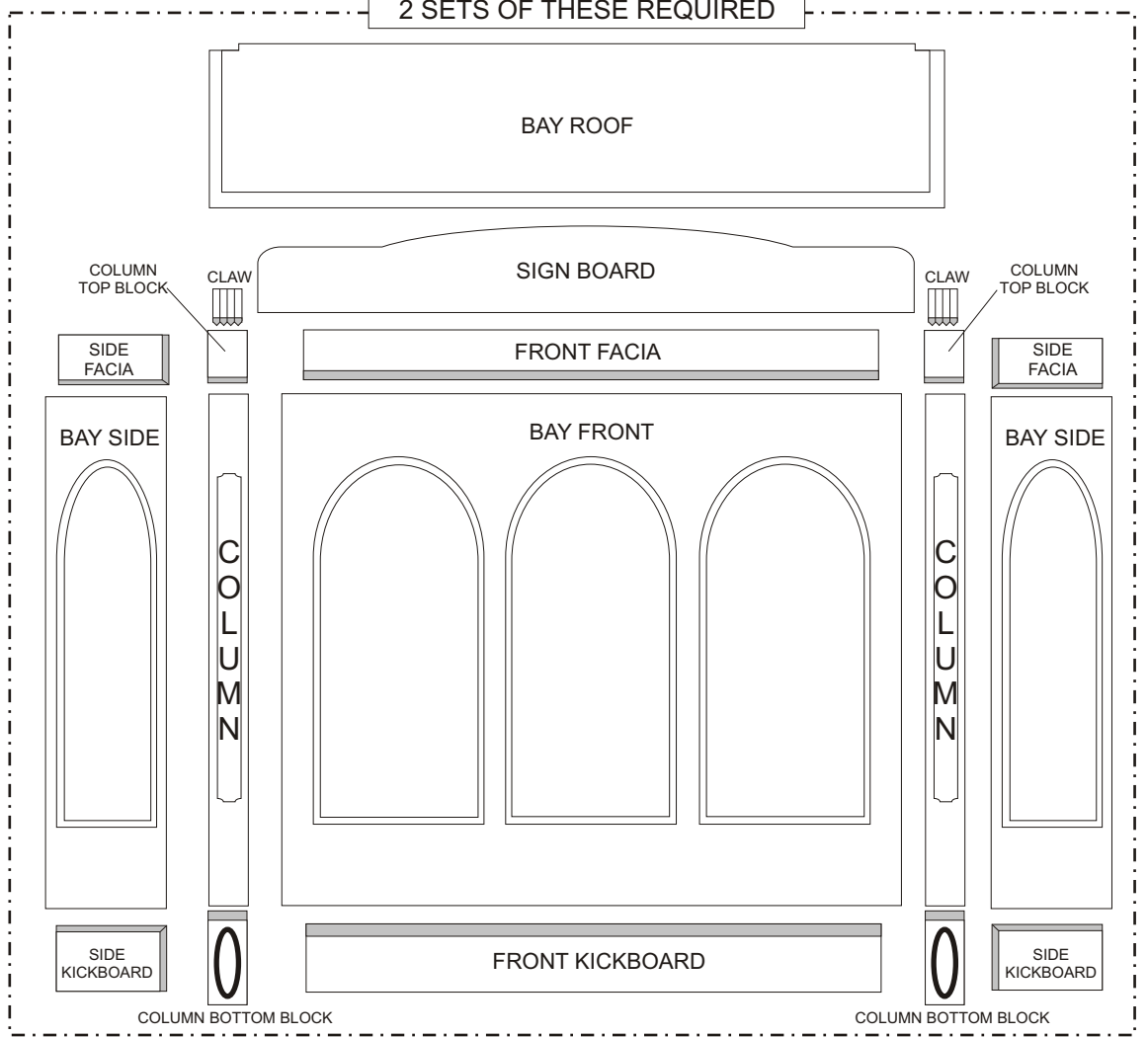
PORCH COVER



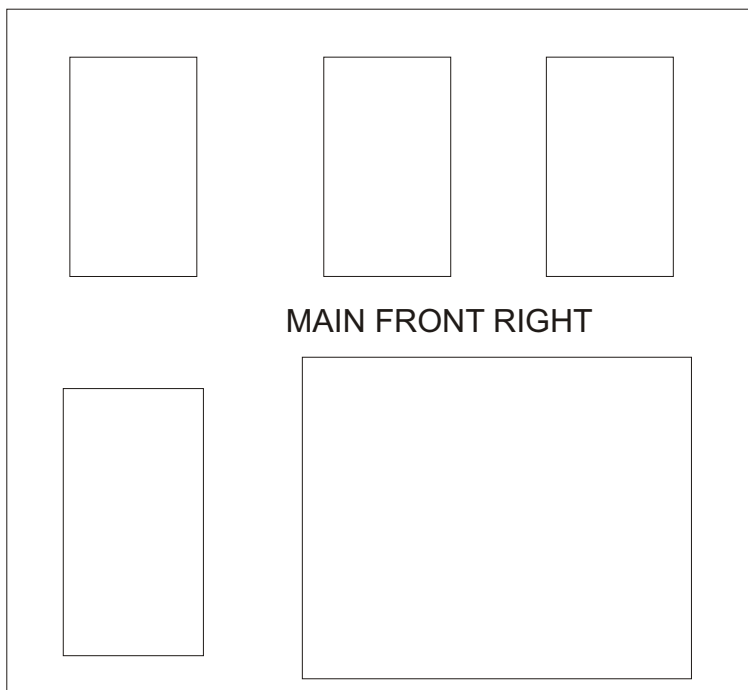
DOOR



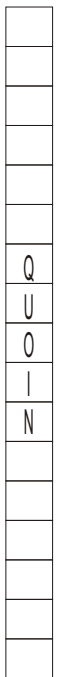
DOOR STEP



MAIN FRONT LEFT

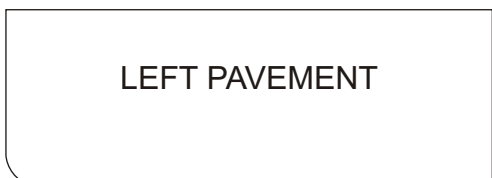


MAIN FRONT RIGHT



Q
U
O
I
N

x4



LEFT PAVEMENT



RIGHT PAVEMENT

PREPARATION

Prior preparation will be an important factor as to the quality of the finished product.

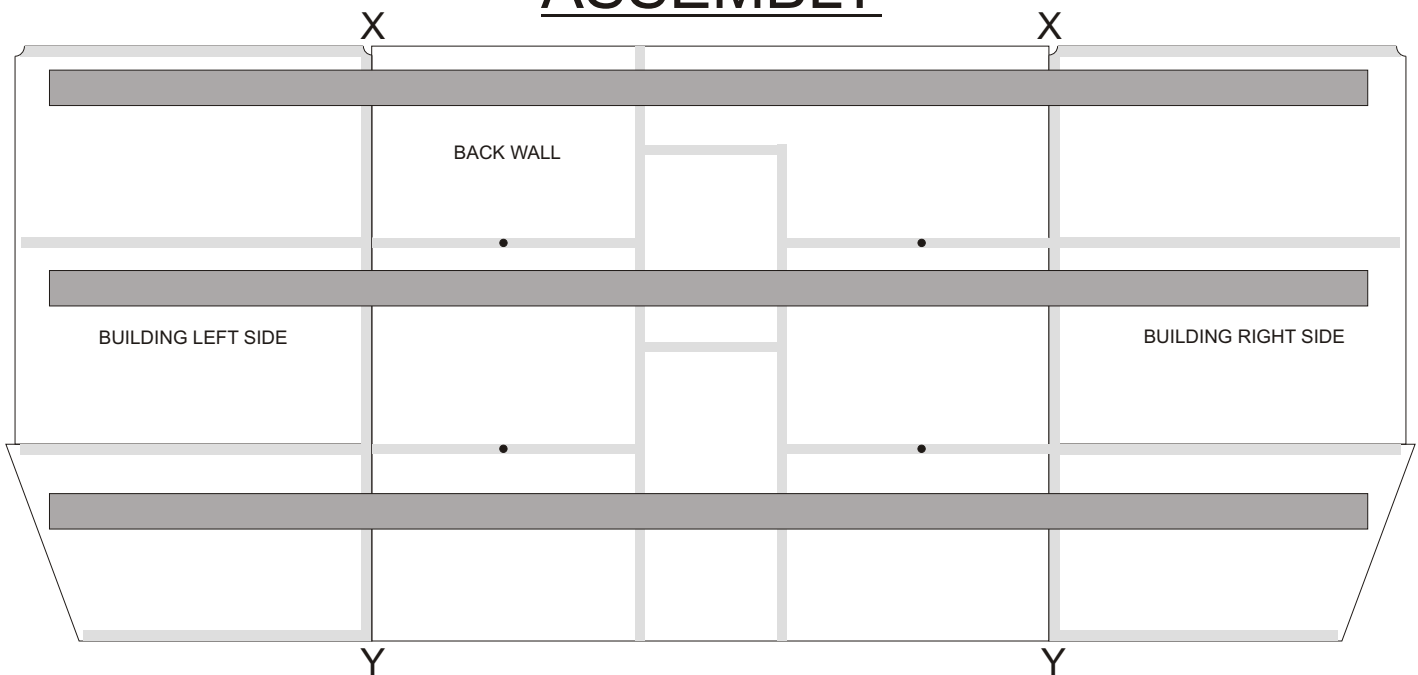
Ensure a large enough work surface is flat, clean and dry.


Ensure that you have fully read this booklet.

The dry-run assembly is most important.

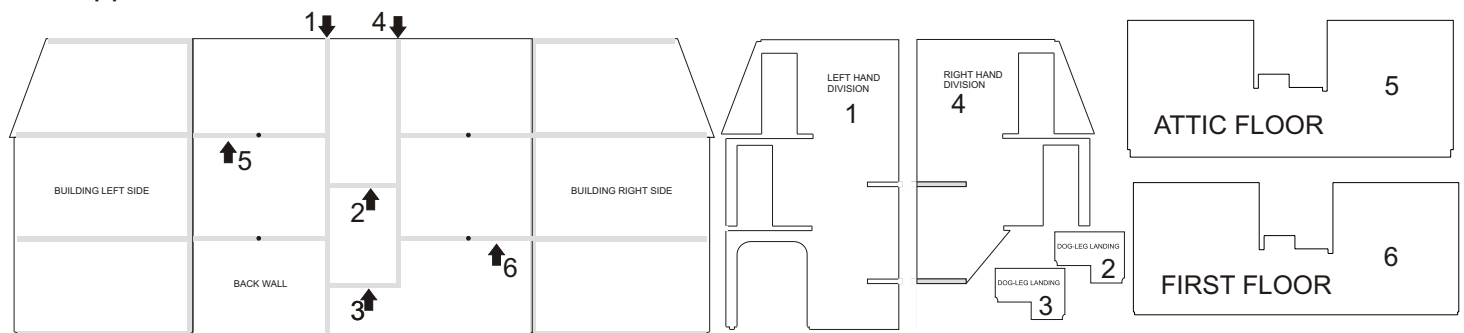
Any surface dust, produced during manufacture, can be removed with brush attachment fitted to a Hoover. This applies to the larger components only as small items could disappear up your Dysonian windpipe forever, these should instead be dusted with a clean, dry paintbrush.

ASSEMBLY



Put these three panels on the work surface, as above, but with the GROOVES FACE DOWN. Ensure that the panels line up at X and form a straight horizontal line across the base of the panels. Place parcel tape (50mm wide) as shown , this will act as a hinge and hold the carcass together during assembly.

Take hold with both hands at Y Y and with 'even lift' turn the whole piece over so that the grooves are now uppermost.



Apply glue to grooves in back panel, avoiding filling the holes for electric lighting, then:-

Fit left hand division at 1.

Fit dog leg landings at 2. & 3.

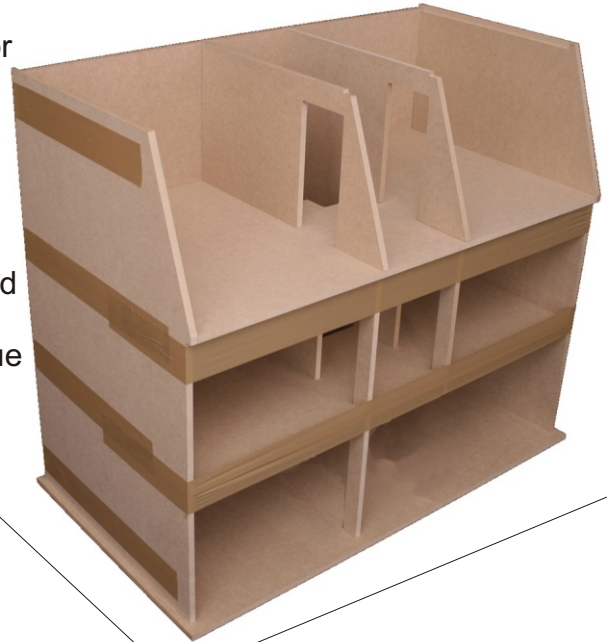
Fit right hand division at 4.

Fit attic floor 5 (ending up 9mm forward of 1 & 4)

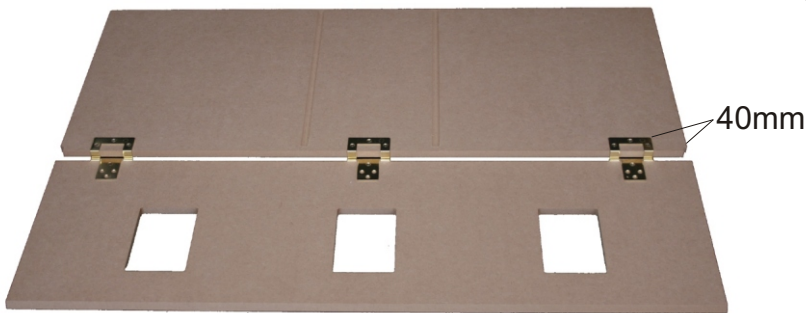
Fit first floor 6 (ending up flush with front of 1 & 4)



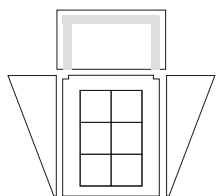
Apply glue to the grooves in both left and right sides. The sides can now be raised and joined to both the first floor and the attic floor. Apply tape across front of carcass as shown in the picture.



Make sure that the carcass is standing level and undisturbed until the glue is fully dry. Any movement after it has started setting, but before the glue is dry will cause a permanent fault in the glue joint.



While the carcass glue is drying you may as well hinge the mansard onto the roof. The mansard is 9mm longer than the roof therefore it needs to be central so it overhangs the roof 4.5mm at each end. The outer two hinge mountings on the roof are set in 40mm from the edge. Use the counter sunk screws to mount the hinges. TIP- Use the domed pin to make a tiny hole to help the screw take hold. When the carcass glue is dry, glue the roof to the carcass, tape as shown and leave to dry.



Assemble the dormers and hold together with rubber bands until the glue has dried.

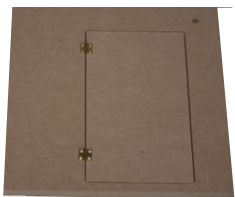
Leave the white plastic windows out until you have painted



When the dormers are dry, prop the mansard up and glue the dormers into position.

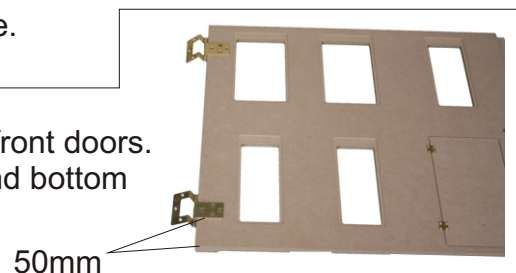


The four stairs can now be glued into position.



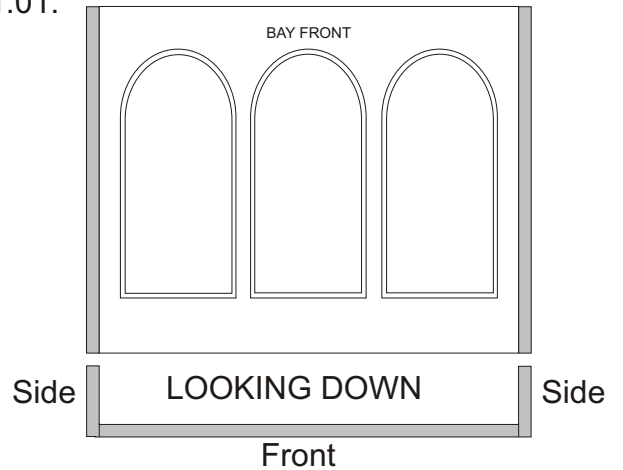
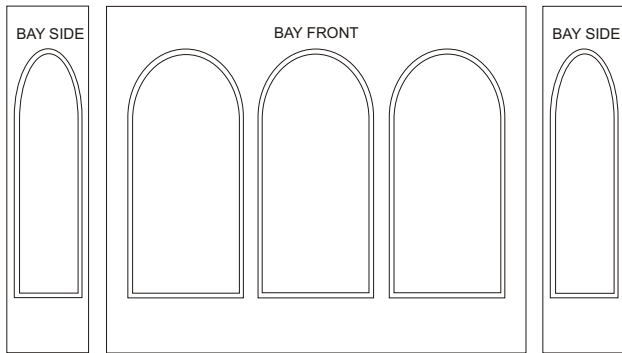
The small front door can now be hinged. Place it centrally in the opening and fit the two hinges with the 8 domed screws. TIP- Use the domed pin to give a starting hole. If the door moves while being hinged, use tape.

The large hinges can now be fitted to both main front doors. They should be positioned 50mm from the top and bottom edge of each main front door.



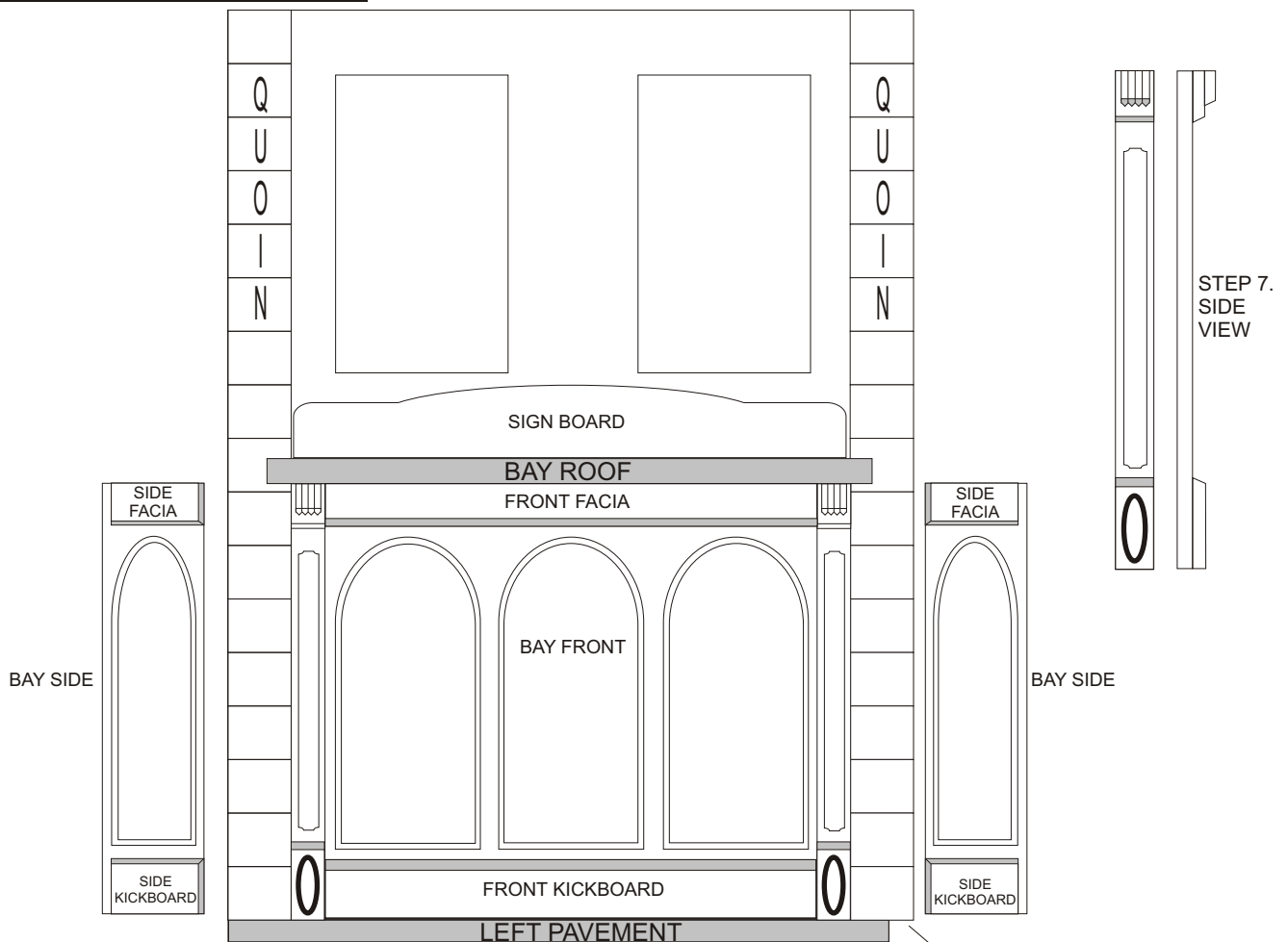
The bay can now be built.

Apply glue to the left and right sides of the bay front and fix the bay side panels at right angles to the bay front. TIP- Sprung, wooden clothes pegs can be a great help in holding small, awkward-shaped parts together whilst gluing. For larger parts you can use something similar but they are bigger and made of plastic. These are available from a shop who's name can't be mentioned but the name comes from the fact that everything they sell costs more than 99p - but less than £1.01.



Two of these bays are required. Leave to dry.

THE FRONT LEFT DOOR

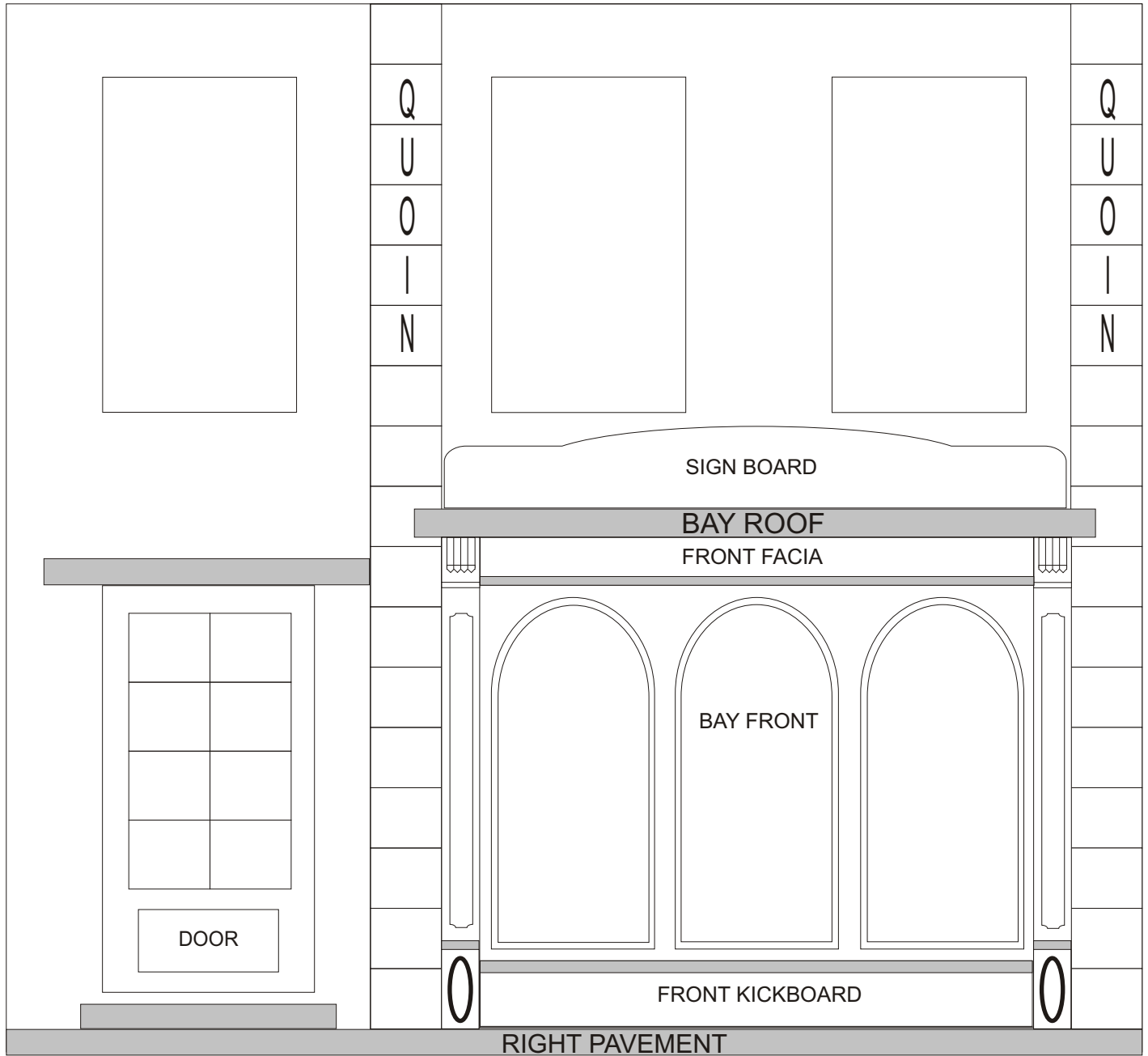


For the following stages we will assume that you have applied glue.

1. Fit the left hand quoin flush with the top and left side of main door.
2. Fit the left pavement (rounded corner to the left) flush with left, bottom and right edges of main door.
3. Fit the bay flush with the quoin and the pavement.
4. Fit the bay roof and the right hand quoin. Quoin will overhang top & bottom by about 10mm.
5. Fit left column, front kickboard, front facia and right column.
6. Fit side facia and side kickboard to both bay sides. (note position of bevelled edges)
7. Fit column bottom blocks, column top blocks and claws as shown.
8. Fit sign board aligned with bay front. (board should be seen as a vertical extension of bay front)

THE FRONT RIGHT DOOR

The procedure of construction of the right door is the same as the left door on the previous page but starting from the right hand side of the door and working towards the left.



Follow steps 1. to 8. but working from right to left. (+right pavement-rounded corner to the right).

9. Fit doorstep onto right pavement centrally under door.
10. Fit porch cover centrally over door and butted up to the quoin on the right.
11. The five window frames can be fitted any time after decoration.

The main doors can now be hinged to the carcass.

After fitting:-

Measure from the outside inner edge of each of the doors to the centre of the magnetic catch.

Measure the same distance in from the outer edge of the first floor and push in the domed pin.

AND FINALLY

We hope that you have enjoyed building this quality product from Barbara's Mouldings.

Why not contact us for a catalogue or just phone us to discuss your next project.

We have a range of components, mouldings and claddings to add a perfect finish to your building.

BARBARA'S MOULDINGS

The Cottage, Brooke Road, Braunston, Oakham, Rutland. Tel: 01572 770383